

Consiglio al banco

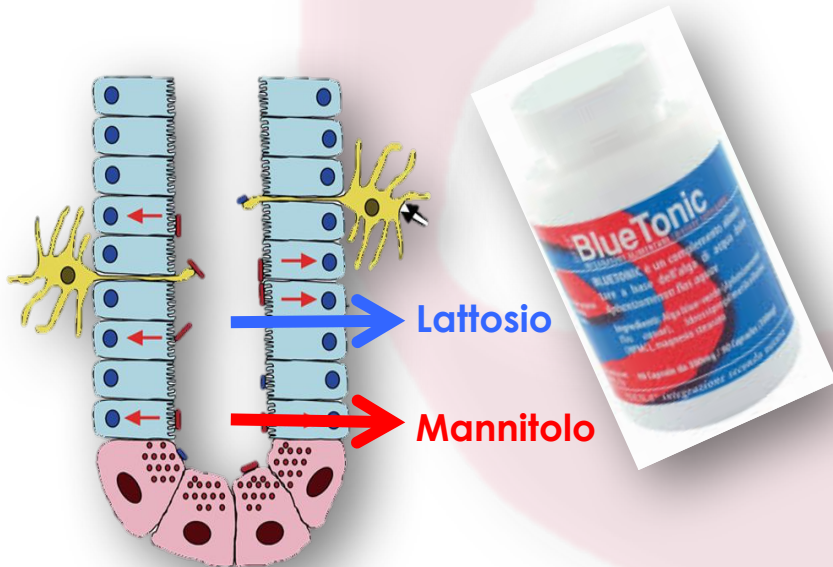


Ogni patologia descritta merita
**sempre un approfondimento
medico** in quanto spesso sono
manifestazioni acute su un
terreno cronico e pertanto
necessitano di rimedio
omeopatico “costituzionale”
○ “cura base omeopatica”
○ “simillimum”

Drenaggio efficace

1 Ripristino permeabilità intestinale

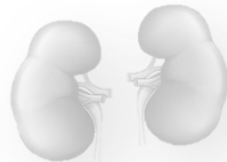
(per evitare il passaggio di tossine dal lume intestinale al sangue)



Acer campestre
Agrimonia eupatoria
Bardana
Cardo mariano
Fumaria officinalis
Tarassaco



Betula pubescens
Betula pendula
Chrysanthellum americanus
Quercus pedunculata
Solidago virga aurea
Ortica



Viola tricolor
Vite rossa



2 Stimolo emuntori (fegato, reni e pelle)

Cinetosi



COCCULUS



TABACUM



PETROLEUM

IPECA



Puncture



**APIS
MELLIFICA**

**LEDUM
PALUSTRE**

**BELLADONNA
ATROPA**

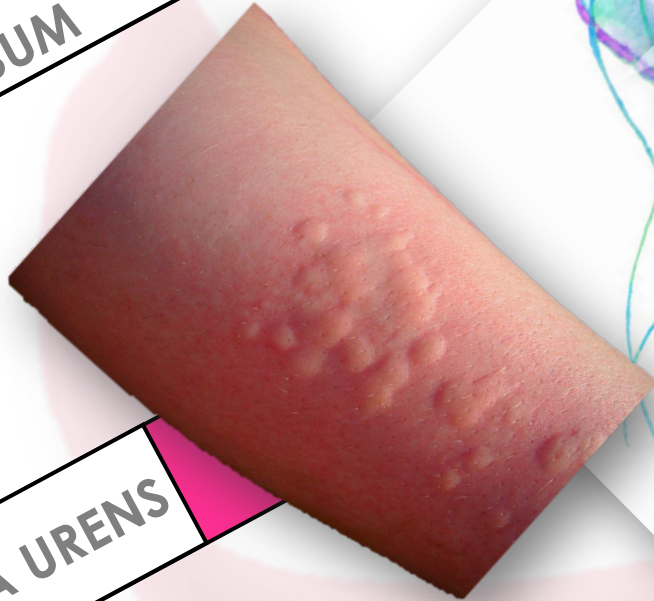
**LACHESIS
MUTUS**

Puncture

Bruciori
> acqua
calda

ARSENICUM
ALBUM

URTICA URENS



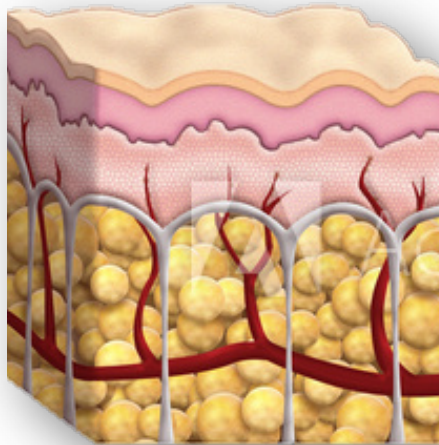
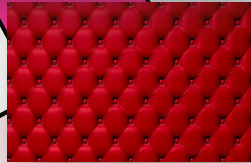
Subito in
acqua
calda



Dopo

SULPHUR

Dermatite



BELLADONNA
ATROPA

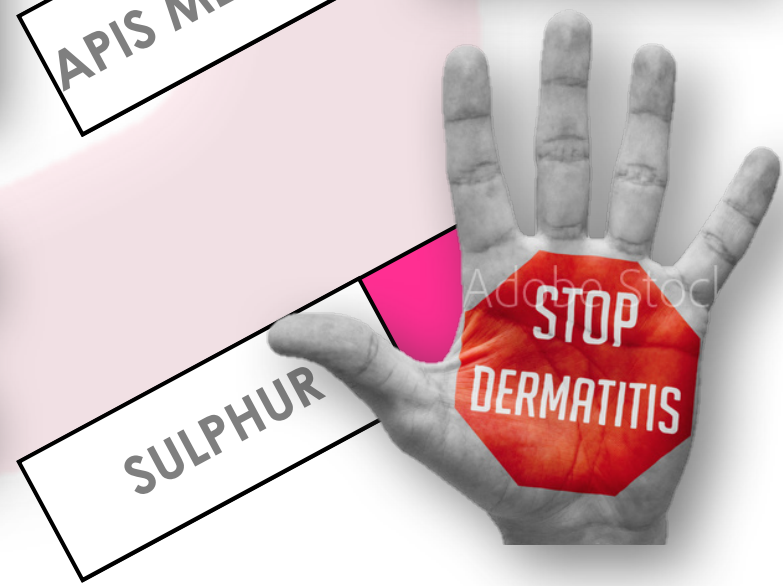


APIS MELLIFICA

NUX VOMICA



ARSENICUM
ALBUM



SULPHUR

Scottature

URTICA URENS



BELLADONNA
ATROPA



CANTHARIS



RHUS
TOXICODENDRON




APIS MELLIFICA



A collage of images related to heat and stress. It features a large, angry sun with a face, a thermometer with a smiling character, a person holding their head in pain, a person with a heart rate monitor, and a person with a drum on their head. Labels include 'GLONAINUM', 'VIRENS', and 'GLONAINUM'.

**BELLADONNA
ATROPA**



**GELSEMIUM
SEMPERVIRENS**

GLONINUM



Congiuntivite



**RUTA
GRAVEOLENS**

**MERCURIUS
SOLUBILIS**



**ARNICA
MONTANA**

**BELLADONNA
ATROPA**

**EUPHRASIA
OFFICINALIS**

Traumi - Sport



ARNICA
MONTANA



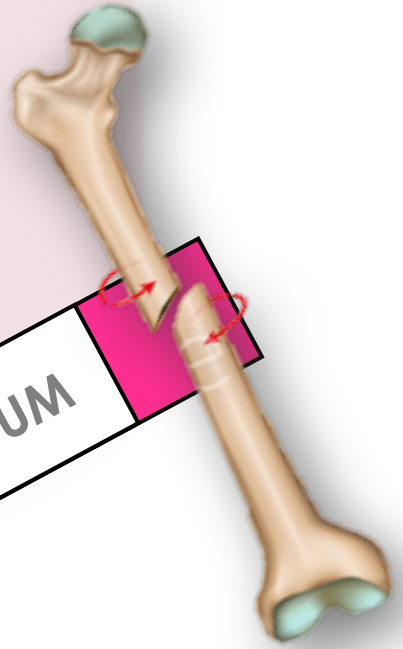
BRYONIA
ALBA

Periostio

RUTA
GRAVEOLENS

RHUS
TOXICODENDRON

SIMPHYTUM



Febbre

ACONITUM
NAPELLUS



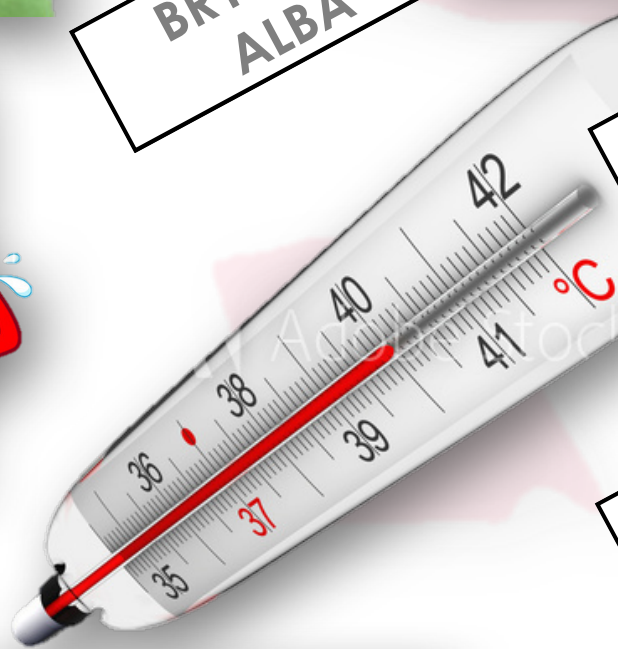
BRYONIA
ALBA



ARNICA
MONTANA



BELLADONNA
ATROPA



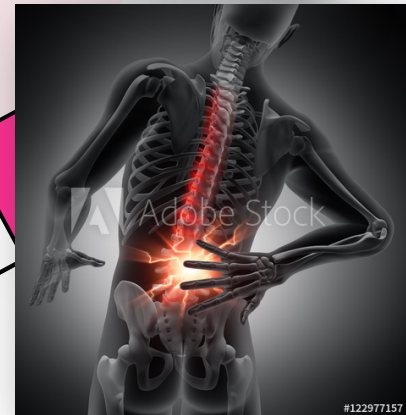
RHUS
TOXICODENDRON



GELSEMIUM
SEMPERVIRENS



EUPATORIUM
PERFOLIATUM

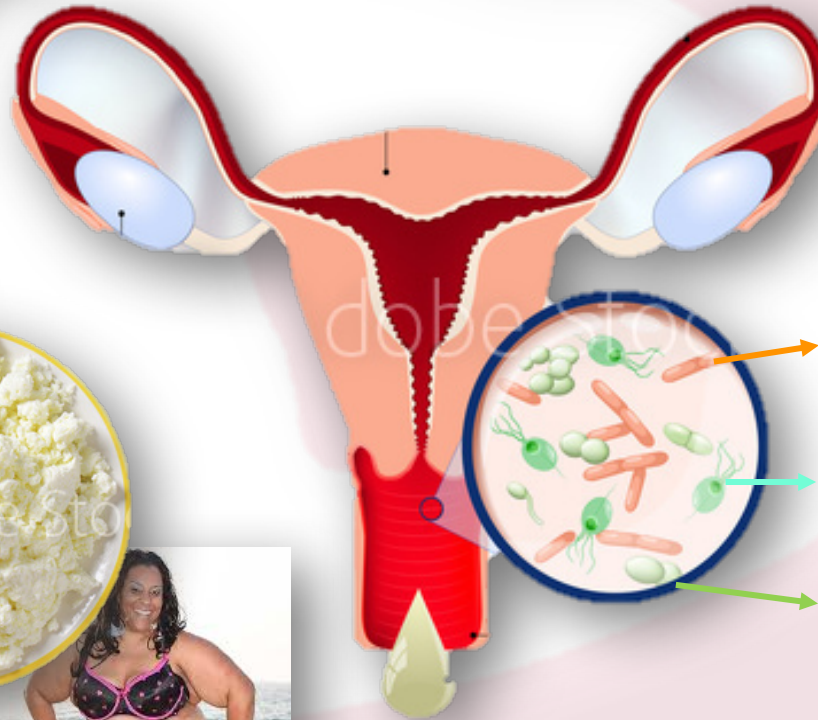


Candida

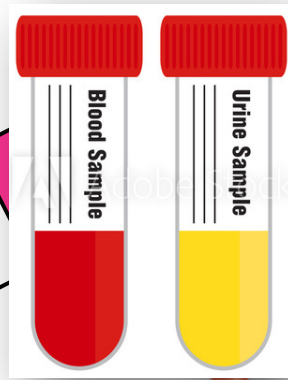
SEPIA OFF.



THUYA
OCCIDENTALIS

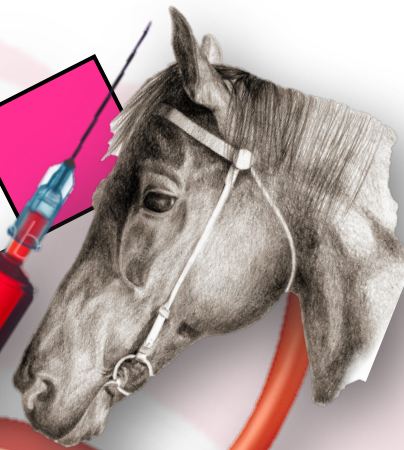


Cistite



CANTHARIS

NITRICUM
ACIDUM



Adobe Stock

BELLADONNA
ATROPA



MERCURIUS
CORROSIVUS



BROWN



RED

THUYA
OCCIDENTALIS

1-2-3-4...

Diarrrrea



COLOCINTHYS

ANTIMONIUM
CRUDUM

ARSENICUM
ALBUM

PODOPHYLLUM

CHINA OFF.

CHAMOMILLA

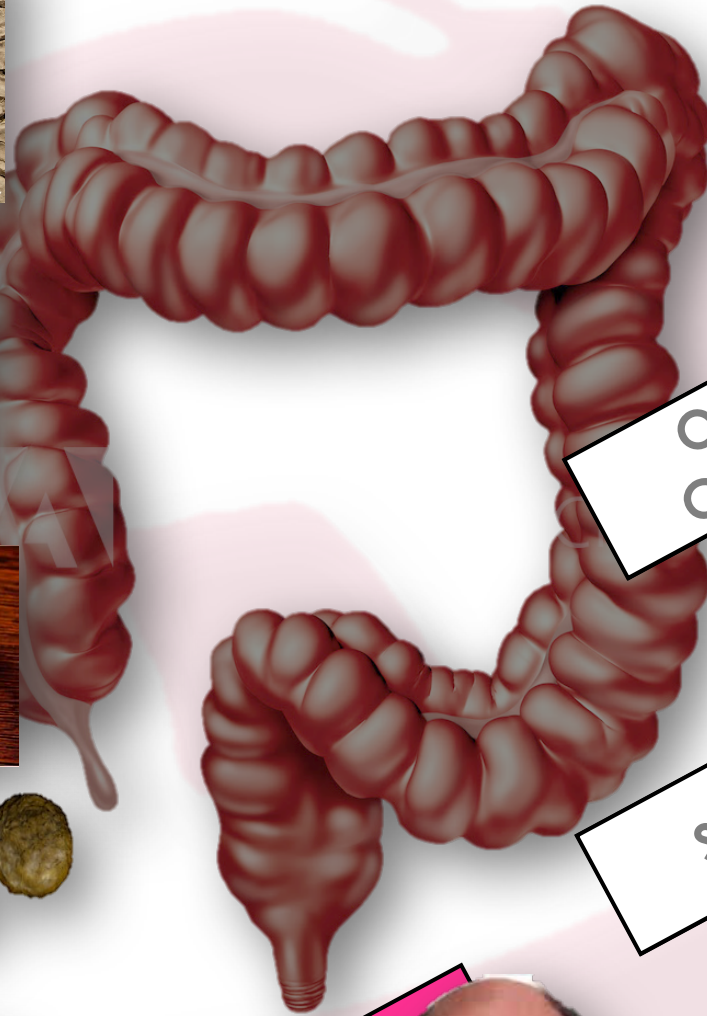
AETHUSA
CYNAPIUM

SEPIA OFF.



158235649

Stipsi



ALUMINA



BRYONI
ALBA



NATRUM
MURIATICUM



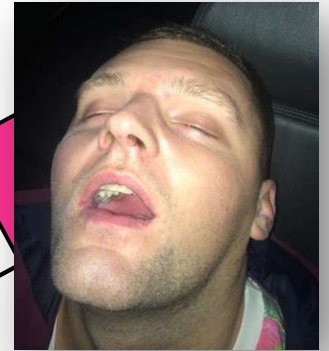
LYCOPodium
CLAVATUM



NUX VOMICA



OPIUM
CRUDUM



SILICEA



SEPIA





LYCOPodium



NUX VOMICA

Emorroidi



CLK 18

Uso cutaneo - Tubo da 40 g

dynamis
MEDICINALE
OMEOPATICO
Senza indicazioni
terapeutiche approvate



CHELIDonium

BISMUTHUM



AESCULUS H.



COLLINSONIA

PAEONIA
RATHANIA

HAMAMELIS



Gravidanza

SEPIA OFF.

ACTAEA
RACEMOSA

RICINUS COM.

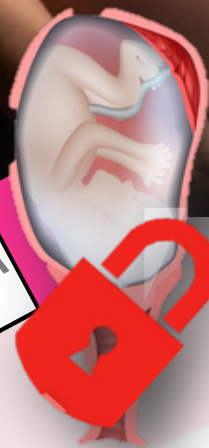
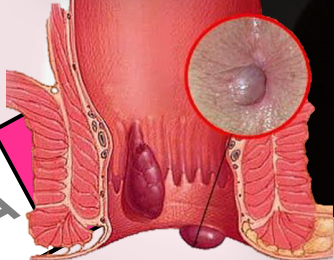
THUYA OCC.

ARNICA
MONTANA

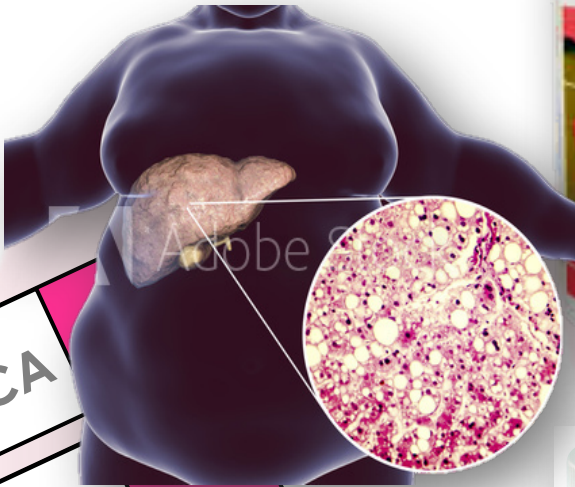
COLLINSONIA

CAULOPHYLLUM

PULSATILLA



Colesterolo



#35494329

**Ridurre
le farine**

NUX VOMICA

**THUYA
OCCIDENTALIS**

**BARYUM
CARBONICUM**



PULSATILLA



**KALIUM
PHOSPHORICUM**



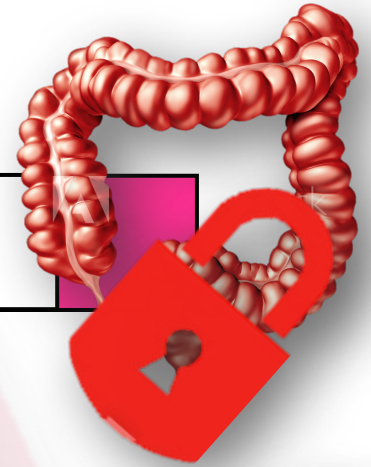
**GELSEMIUM
SEMPERVIRENS**



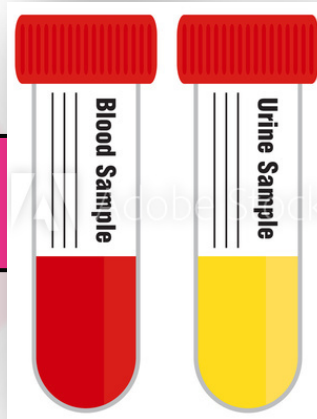
NUX VOMICA



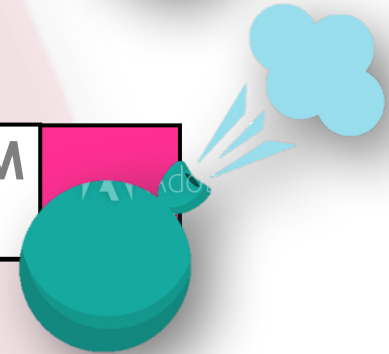
ALUMINA



CANTHARIS



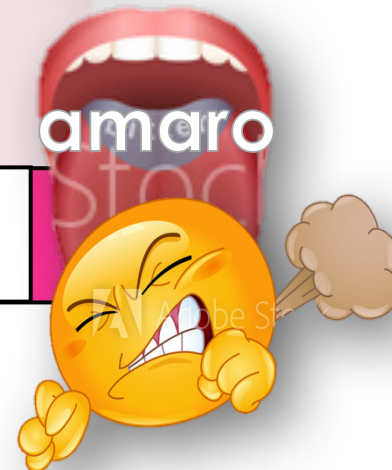
**LYCOPodium
CLAVATUM**



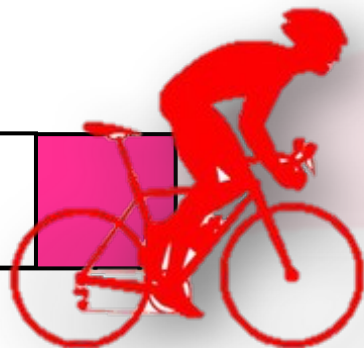
**ARSENICUM
ALBUM**



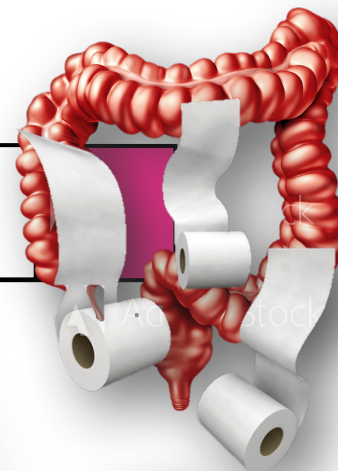
**CHINA
OFFICINALIS**



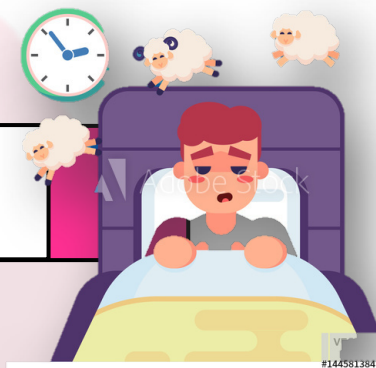
**ARNICA
MONTANA**



**ARSENICUM
ALBUM**



**IGNATIA
AMARA**



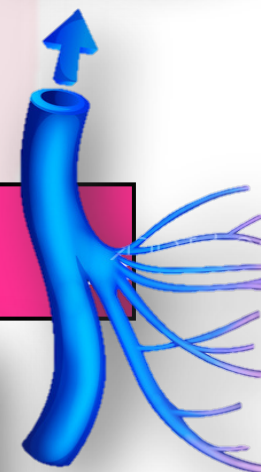
**RICINUS
COMMUNIS**



**SEPIA
OFFICINALIS**



**HAMAMELIS
VIRGINIANA**



**Inlight
Foot Balm**

